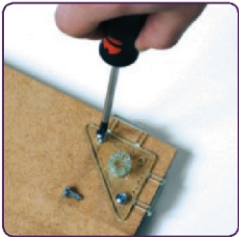
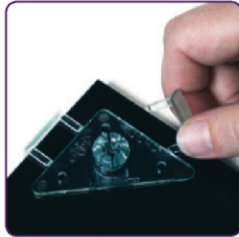
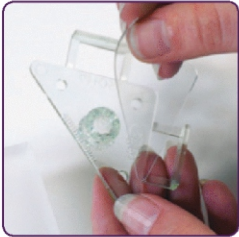


# ghost™

## hidden support

Ghost™ is a hidden support system fastened or adhered to the back of the panels, signs and dimensional letters. Ghost™ achieves a clean look without drilling permanent holes through signage material.



### Features:

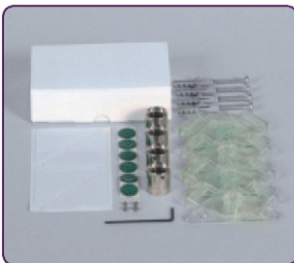
- Materials: brass nickel plated barrel, poly-carbonate plate & snapping fastener
- Tamper resistant feature: snapping lock fastener
- Suitable for indoor applications
- Installation methods: VHB tape, liquid glue, screws or silicone (only use VHB tape and glue for indoor applications)
- Recommended load per piece: test each installation application individually
- No holes required in signage substrate

### Packaging:

Sold in packs of four.  
 Assembly kit included.  
 Replacement Ghost™ plastic piece available 4/pk - STD-FG46-RPL



▶ Visit [clear-path.com](http://clear-path.com) for an installation video.



<b>Brass / Poly-carbonate</b>
<b>Clear Chrome (09)</b>
<b>STD-FG46-09</b>



D = Diameter L = Length

