

nouveau™

curved aluminum

The modern styling of the Nouveau™ curved frame system will give your next signage project a sleek, dimensional look. Nouveau™ frames add a subtle hint of contemporary design without overwhelming the intended message.



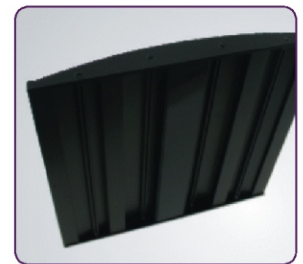
Features:

- Ready to mount.
- Lightweight anodized aluminum frame with black or grey matte polymer finishing caps.
- 100% ADA compliant. Signs that are fabricated from engravable sheet materials (including those with Grade 2 Braille) can be easily inserted.
- Compatible with paper, aluminum or engravable sheet material inserts up to 1/16" thick.
- Special recessed interior channel feature requires drilling only through one layer of extrusion to mount to a flat surface.



Packaging:

Sold individually.
 Frame pre-assembled.
 Clear gloss lens included for graphics protection.


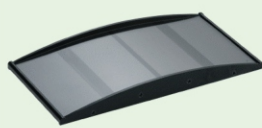
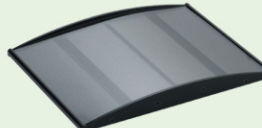
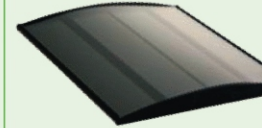
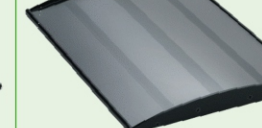


wall plates

<p>Silver</p> 	 <p>STD-CRV3-310 - Grey end caps STD-CRV4-310 - Black end caps Height = 3.07" Length = 10"</p>	 <p>STD-CRV3-410 - Grey end caps STD-CRV4-410 - Black end caps Height = 3.88" Length = 10"</p>
--	---	--



frames (available with black end caps)

<p>Black</p> 	 <p>STD-CRV4-48 Height = 4" Length = 8"</p>	 <p>STD-CRV4-68 Height = 6" Length = 8"</p>	 <p>STD-CRV4-88 Height = 8" Length = 8"</p>	 <p>STD-CRV4-811 Height = 8.50" Length = 11"</p>
---	--	--	---	---

frame collection